

MAIN CAMPUS FLOOR PLAN

ACADEMIC WINGS/BUILDINGS

- Adult Education E
- Agriculture/Engineering M, T and W
- Business/Computer Science B
- Fine and Applied Arts C
- Health Professions H
- Humanities C
- Mathematics M
- Natural Sciences L
- Parkhill Applied Technology Center T
- Social Sciences D
- Tony Noel Agricultural Technologies ... W

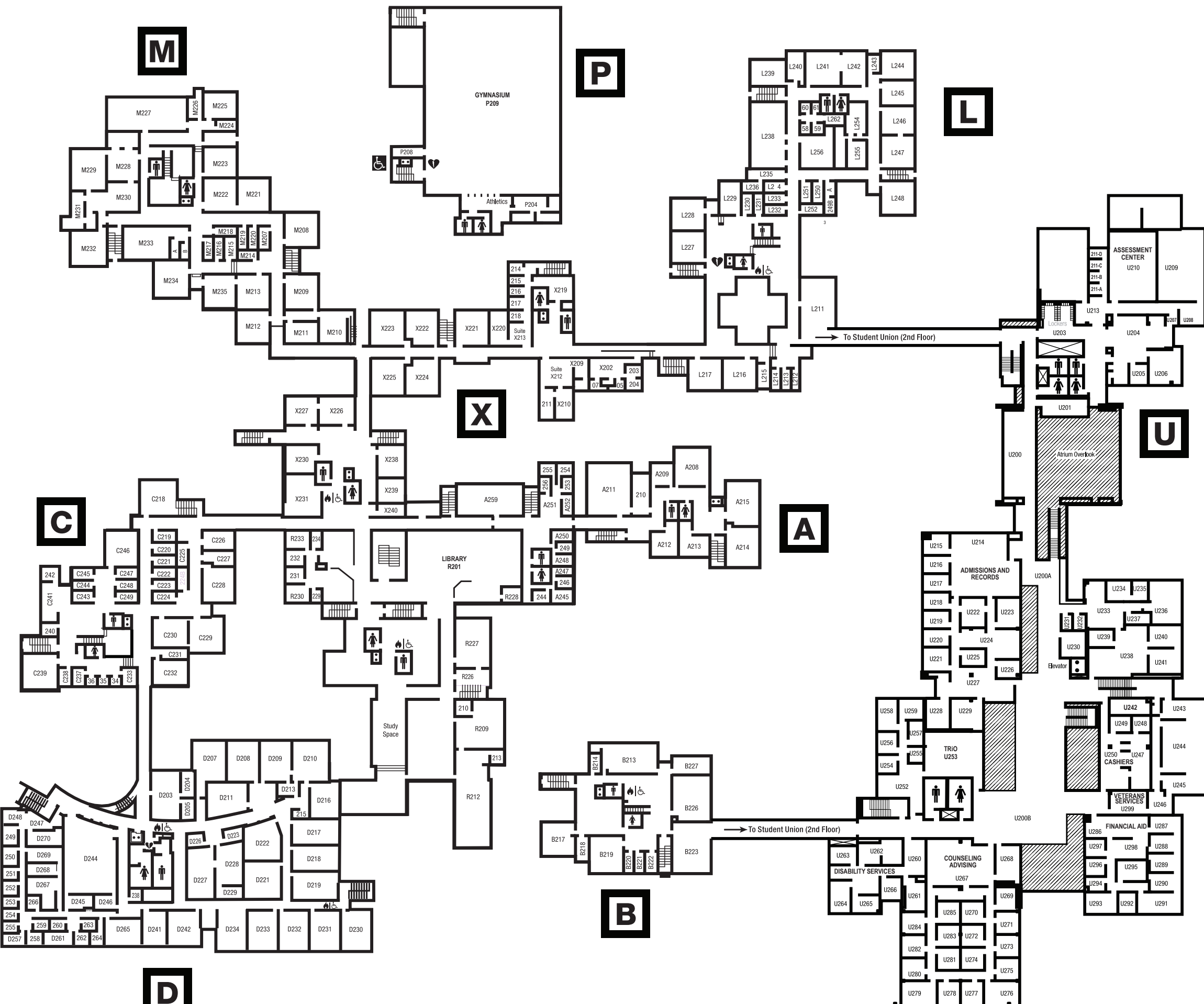
STUDENT SERVICES

- Admissions/Records U214
- Adult Re-entry U233
- Assessment Center U203
- Bookstore U125
- Career Center U238
- Cashiers U247
- Center for Academic Success D120
- Counseling/Advising U267
- Dean of Students U242
- Disability Services U260
- Financial Aid U286
- Student Life U111
- Technology Service Desk A184
- TRiO U252

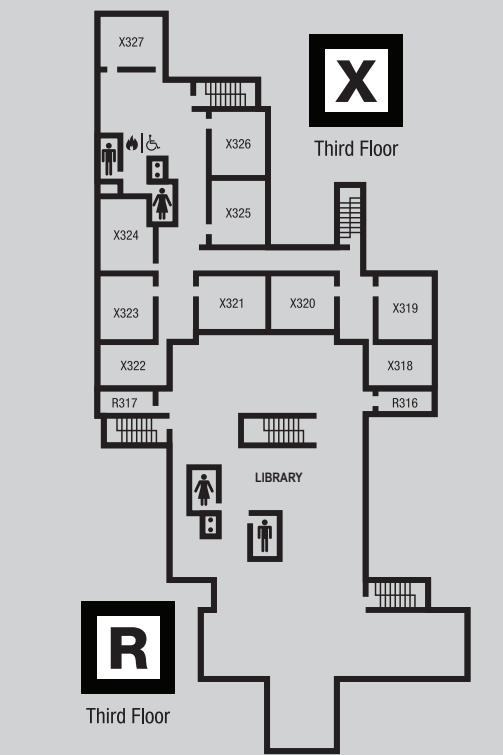
GENERAL

- Administration U330
- Art Gallery X
- Child Development Center G
- Bus Stop U1 entrance
- Dental Hygiene Clinic L149
- Dodds Athletic Center P
- Fitness Center P
- Food Service C and G
- Human Resources A
- Library R
- Parkland Foundation & Alumni U340
- Planetarium M
- Public Safety A160
- Theatre C
- Vending C and G
- Wesley Food Pantry M138

- Accessible entrance
- Elevator
- Stairs
- Restrooms
- Automated external defibrillator



SECOND FLOOR (2)



THIRD FLOOR (3)